

Products and Applications

# ***OPEN-ENDED V-BELTING***

www.optibelt.com

# **optibelt**



**Drive solutions with Optibelt**

# optimat

## Open-ended V-belting, punched – DIN 2216

Optimat V-belting is open-ended and joined endless by means of a simple belt connector following the determination of the belt length.



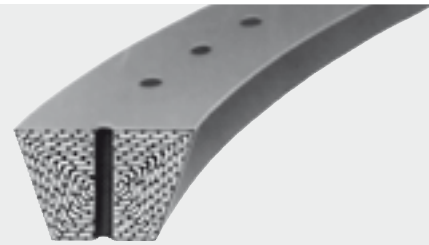
Optimat V-belting is adjustable in length for all centre distances with no problems. The belts can be delivered in any length, depending on the drive requirements. Stockholding is remarkably easy and economic.

With Optimat belting, there is no need for various belt lengths to be kept in stock for all application possibilities. Depending on the drive, Optimat V-belting can be cut to the correct length on site.

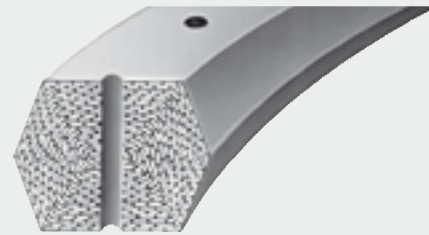
Open-ended V-belting can also be applied on fixed centre drives. Should the belt stretch it can be cut to length in a few minutes. Optimat belting allows quick installation, especially for enclosed drives or those ones with limited access. The drive does not have to be disassembled to replace belts.



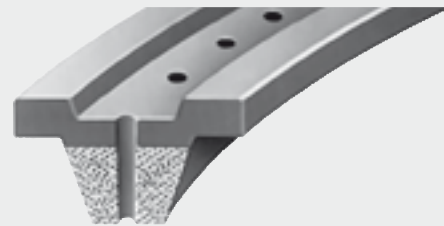
Optibelt is the specialist for high quality drive products



**optimat DE**  
Open-ended V-belting  
DIN 2216, punched



**optimat DK**  
Open-ended double  
section V-belting punched



**optimat FK**  
Open-ended conveyor  
belting, punched

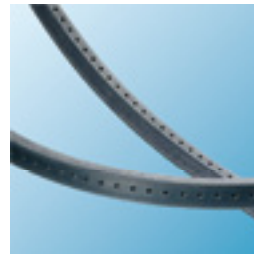


Power Transmission

# optimat

## Advantages:

- easy and quick assembly because of simple connectors (also useful for difficult to access drives)
- any length possible
- by shortening the belts, costly tensioning devices can be avoided
- low noise level
- hardly any maintenance required
- reduced spare part stockholding
- the power transmission capability of classical section V-belts
- work in DIN/ISO/BS V-pulleys
- electrically conductive, anti static (on request)



## Application examples

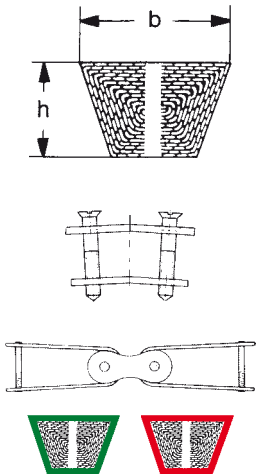
- roller conveyors
- ventilation and air-conditioning
- pallet transport systems
- belt conveyor systems for wooden or plastic boards
- special applications needing temporary solutions

[www.optibelt.com](http://www.optibelt.com)

# optibelt



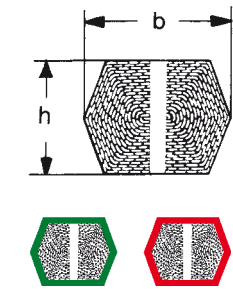
## optimat OE Open-ended V-belting, DIN 2216, punched



Section*	Width x Height (mm)	Weight (≈ kg/m)	Plate connector Weight (≈ kg/100 pieces)	Link connector Weight (≈ kg/100 pieces)	Minimum pulley diameter (mm)
Y/6	6 x 4	0.030	0.1	—	50
8	8 x 5	0.050	0.2	—	63
Z/10	10 x 6	0.070	0.3	0.7	80
A/13	13 x 8	0.120	0.5	1.8	100
B/17	17 x 11	0.200	0.8	2.9	140
20	20 x 12,5	0.270	1.4	4.6	180
C/22	22 x 14	0.340	1.7	5.7	224
25	25 x 16	0.440	2.1	5.7	250
D/32	32 x 20	0.680	5.0	16.0	355
E/40	40 x 25	1.000	10.0	—	500

\* available as belting having green or red top surface.

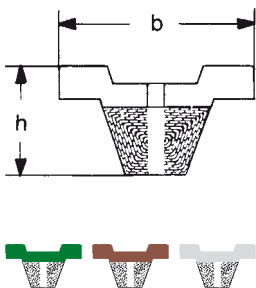
## optimat DK Open-ended double section V-belting, punched



Section*	Width x Height (mm)	Weight (≈ kg/m)	Plate connector Weight (≈ kg/100 pieces)	Link connector Weight (≈ kg/100 pieces)	Minimum pulley diameter (mm)
AA/13	13 x 10,5	0.140	0.6	1.7	140
BB/17	17 x 14	0.250	1.2	2.6	160
20	20 x 16	0.320	1.6	3.7	200
CC/22	22 x 18	0.410	2.2	4.4	224

\* available as belting with green top surface.

## optimat FK Open-ended conveyor belting, punched



Section*	Width x Height (mm)	Weight (≈ kg/m)	Plate connector Weight (≈ kg/100 pieces)	Link connector Weight (≈ kg/100 pieces)	Minimum pulley diameter (mm)
13 x 20	20 x 16,5	0.320	0.6	2.6	140
17 x 30	30 x 20	0.460	0.9	3.7	160
22 x 40	40 x 24	0.740	1.8	5.4	250
32 x 60	60 x 33	1.300	5.6	5.7	450

\* available as belting with green, brown or white top surface.

### Special versions

- available as belting with black chloroprene top surface
- electrically conductive/anti static

Optimat V-belting OE, DK and FK is manufactured in approx. 50 m rolls.

### Optibelt GmbH

P.O. Box 10 01 32 • 37669 Höxter/Germany  
 Tel. +49 (0) 52 71 - 6 21 • Fax +49 (0) 52 71 - 97 62 00  
 info@optibelt.com • www.optibelt.com  
 A member of the Arntz Optibelt Group

All around the world Optibelt drive elements reliably set machines and vehicles in motion